

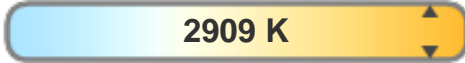
PROLIAD

LED LIGHTING

Light quality:



Color temperature:



Output: 1822 lm
Peak: 3796 cd
Power: 21,3 W
PF: 0,93

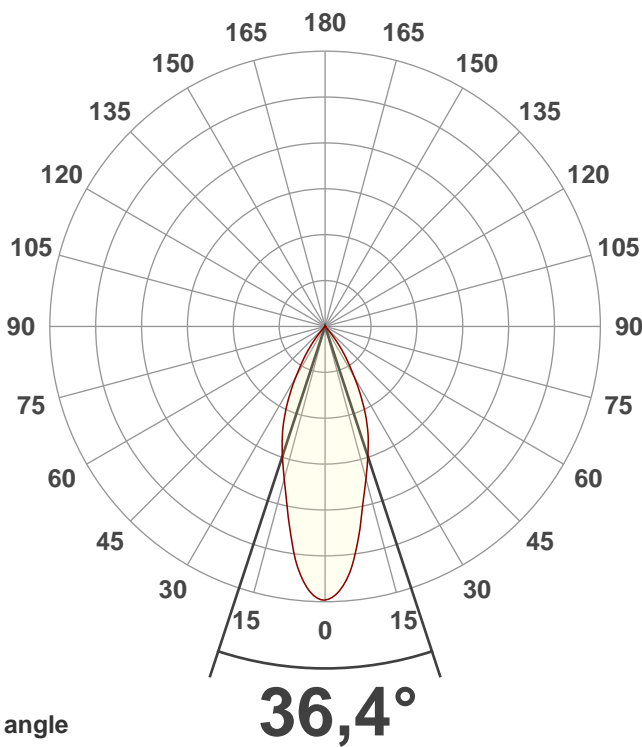


Product name:
Inn-Ground 363 40 graden reflector

Date and time:
2-10-2020 9:08:07

Item number:
900 000363

Additional information:
-XTM19803020CCA
-70mm 40 graden reflector



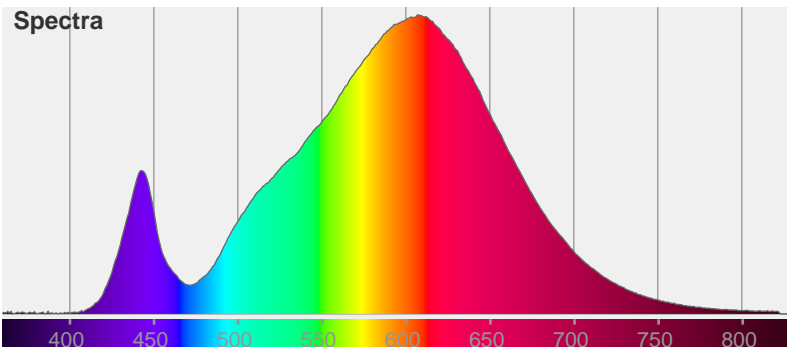
Beam angle

Color



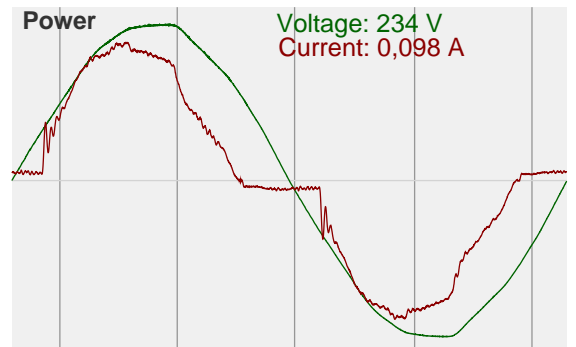
CIE1931
x: 0,446
y: 0,410

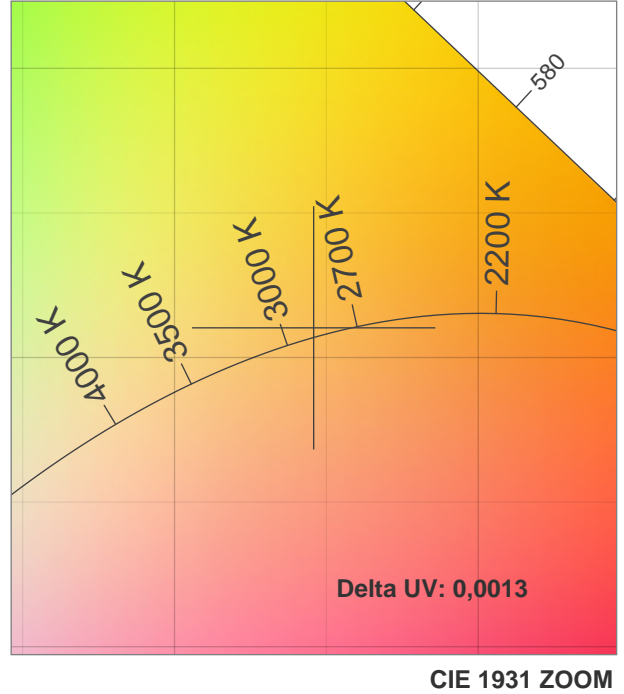
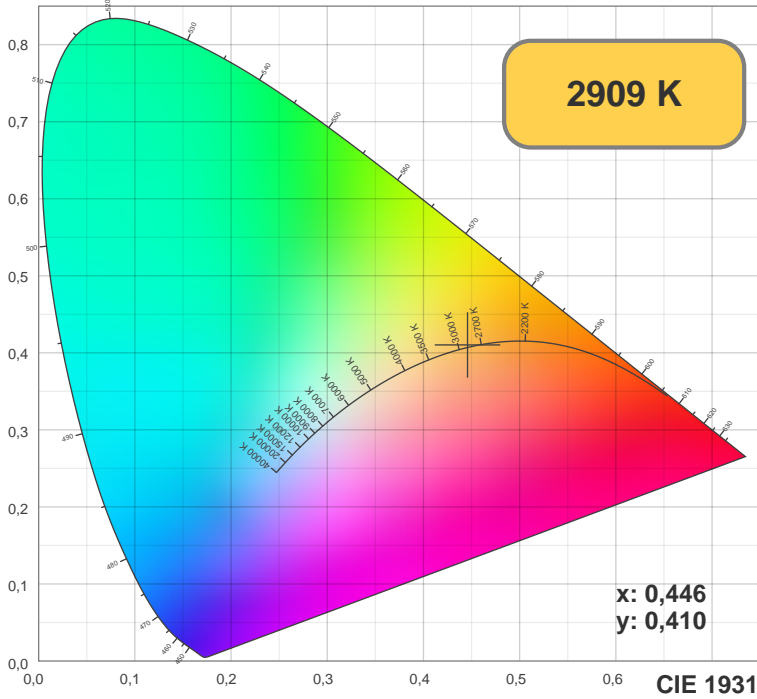
Spectra



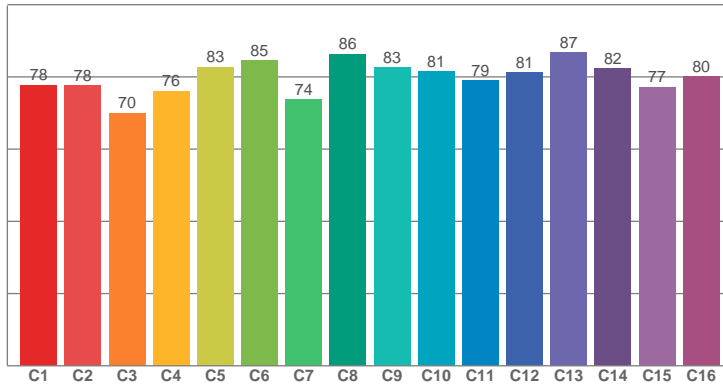
Power

Voltage: 234 V
Current: 0,098 A

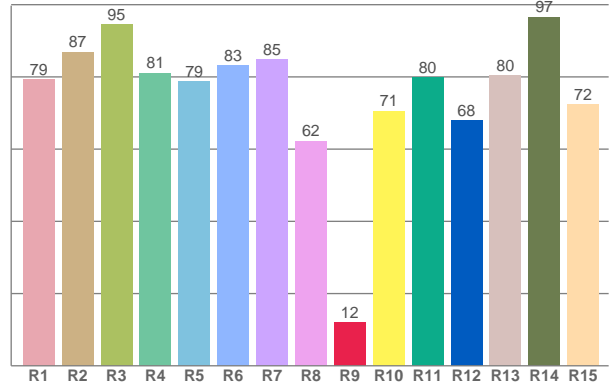




TM30: 79,8



CRI: 81,4 (R1-R8)



CRI R values, only R1-R8 are used to calculate final CRI value

R1	R2	R3	R4	R5	R6	R7	R8	R9	R10	R11	R12	R13	R14	R15
79,20	86,95	94,51	81,10	78,72	83,19	84,87	62,31	12,02	70,55	79,93	68,04	80,32	96,58	72,43

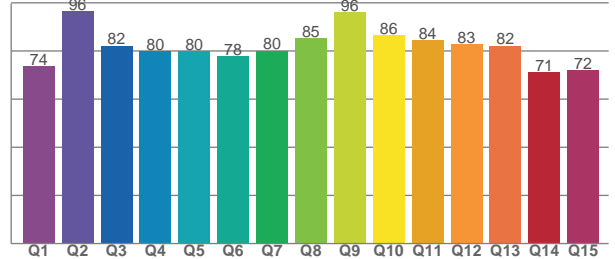
TM30 C values, 16 binned values out of total of 99 C values

C1	C2	C3	C4	C5	C6	C7	C8	C9	C10	C11	C12	C13	C14	C15	C16
77,77	77,71	70,02	76,15	82,76	84,55	73,67	86,38	82,70	81,48	79,03	81,14	86,86	82,33	77,23	80,04

CQS Q values

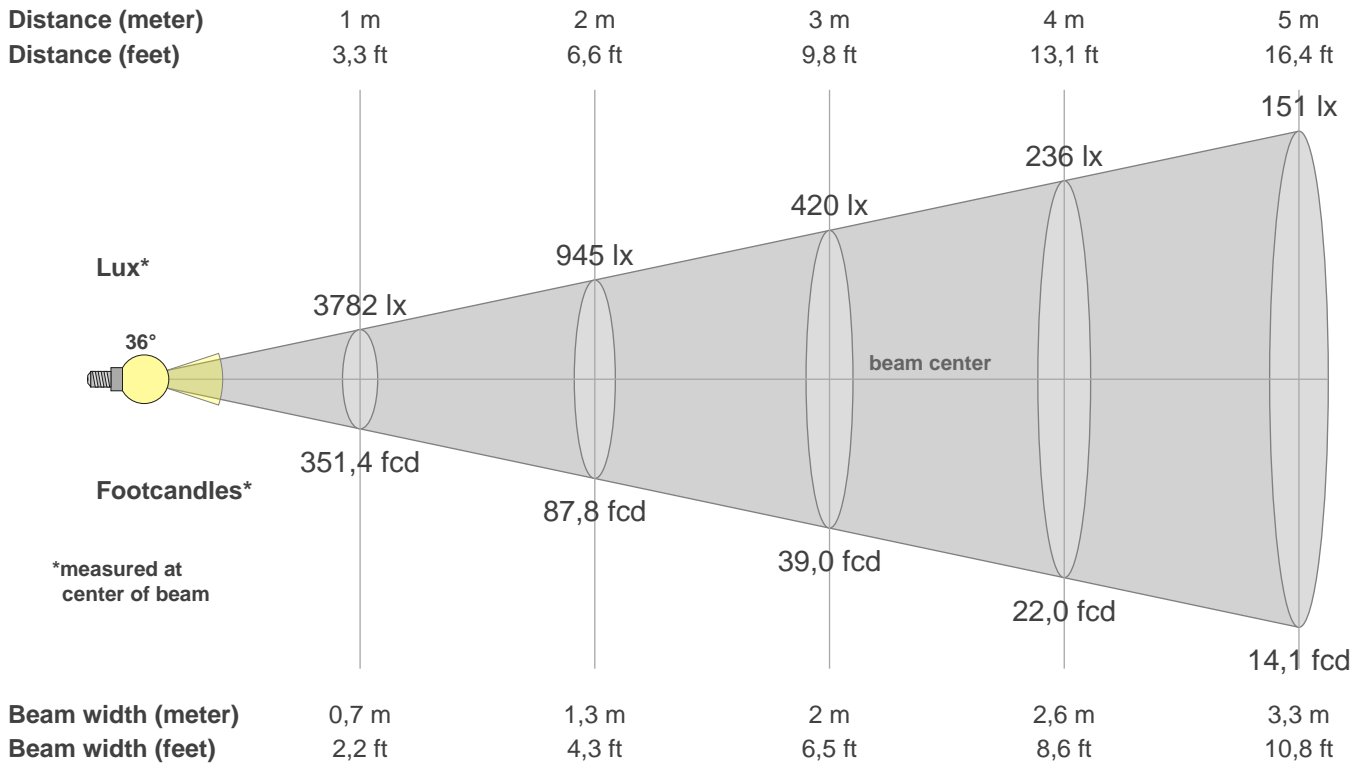
Q1	Q2	Q3	Q4	Q5	Q6	Q7	Q8	Q9	Q10	Q11	Q12	Q13	Q14	Q15
73,79	96,47	82,24	79,91	80,00	77,71	80,12	85,45	95,96	86,43	84,34	82,68	82,23	71,26	72,07

CQS: 80,6



Color parameters

CCT	CRI	CRI R9	TM30 Rf	TM30 Rg	CQS	x	y	u	v	Duv
2909 K	81,4	12,0	79,8	98,9	80,6	0,4	0,4	0,3	0,4	0,0013



Intensities in 0° c-plane

0°	2°	4°	6°	8°	10°	12°	14°	16°	18°	20°	22°	24°	26°	28°	30°	32°	34°	36°	38°
3782	3721	3583	3395	3108	2818	2523	2301	2098	1917	1750	1584	1401	1208	1007	818	648	503	368	240
100%	98%	95%	90%	82%	75%	67%	61%	55%	51%	46%	42%	37%	32%	27%	22%	17%	13%	10%	6%

Intensities in 0° c-plane

0°	2°	4°	6°	8°	10°	12°	14°	16°	18°	20°	22°	24°	26°	28°	30°	32°	34°	36°	38°
3782	3721	3583	3395	3108	2818	2523	2301	2098	1917	1750	1584	1401	1208	1007	818	648	503	368	240
100%	98%	95%	90%	82%	75%	67%	61%	55%	51%	46%	42%	37%	32%	27%	22%	17%	13%	10%	6%

Intensities in 180° c-plane

0°	2°	4°	6°	8°	10°	12°	14°	16°	18°	20°	22°	24°	26°	28°	30°	32°	34°	36°	38°
3782	3730	3621	3408	3141	2832	2554	2304	2098	1916	1743	1572	1391	1203	1010	825	649	507	374	249
100%	99%	96%	90%	83%	75%	68%	61%	55%	51%	46%	42%	37%	32%	27%	22%	17%	13%	10%	7%

Intensities in 180° c-plane

0°	2°	4°	6°	8°	10°	12°	14°	16°	18°	20°	22°	24°	26°	28°	30°	32°	34°	36°	38°
3782	3730	3621	3408	3141	2832	2554	2304	2098	1916	1743	1572	1391	1203	1010	825	649	507	374	249
100%	99%	96%	90%	83%	75%	68%	61%	55%	51%	46%	42%	37%	32%	27%	22%	17%	13%	10%	7%

Beam angle 50%	Field angle 10%	Cutoff angle 2,5%	Intensity ratio in 120° cone	Intensity ratio in 90° cone
36,4°	71,7°	81,7°	99,2%	98,9%